

65W
Incandescent
Equivalent

Dimmable BR30 LED Light Bulb, 8W

Designed for Reliability and Optimal Performance, the HyLite LED 8W BR30 Light Bulb is a highly efficient Bulb that can replace a Standard 65W Incandescent Bulb or 23W CFL for Significant Energy Savings.

Available in Soft White (2700°K), Warm White (3000°K) and Daylight (5000°K), the HyLite LED 8W BR30 Bulb produces up to 870 lumens, using only 8 Watts of Power and lasting up to 23 years (at an on-time of 3 hrs./day) for extended use. Compared to a Standard Incandescent Light Bulb, it uses 88% less Energy, significantly reducing your Carbon Footprint while maintaining the Highest Quality of Light.

- Reduces Energy Consumption and Operating Costs by up to 90%.
- Ultra Long Life: 25,000 hours. Eliminates the hassle of repeated relamping in busy areas.
- Easily installed into Standard Fixtures.
- Instant Start & Restart: No Warm up time required even in Extreme Cold
- Flexible Mounting: Can be Mounted with Base Up, Down or Sideways
- Maintenance-free Operation: Lasts up to 25 times longer than Incandescent Bulb.
- Flicker-free, Crisp, Pleasing Light showing True Colors. Soft, No-Glare Light: Gives Visual Comfort.
- Enhances Vision: Zero Dark Spots for greater Visibility & Safety
- Solid State: High-Shock and Vibration-Resistant. Passive Cooling Design: No Moving Parts for Longer Life
- Safe and Reliable: Isolated Circuit Design.
- Cool Operation - Does not add to Heat Load (up to 90% less heat than Incandescent) while producing brilliantly bright light.
- Good Heat Dissipation with Proprietary-Designed Housing.
- Excellent Thermal Management: Avoids Heat Damage.
- Encapsulated with Heat and Impact Resistant, UV Protected, Non-yellowing, Optical Grade Lens
- No UV Emissions: Does Not attract Insects.
- No Noise, EMI/HD or RF Interference.
- Radiation/Emissions-Free: No Harmful IR Levels.
- Light Pollution Reduction: Semi-Directional Light Output.
- Unlike Compact Fluorescent products it contains No Mercury or Lead.
- Safe: Contain No Hazardous Materials; RoHS Compliant: No Lead, Mercury, Phosphor or Toxic Gases. No disposal requirements. Facilitates LEED® points.
- Environmentally Friendly: 98% of the HyLite LED Bulb is recyclable.
- CE, UL Listed and Energy Star Certified. IP 42. Suitable use in Dry or Damp Locations.
- Low Total Cost of Ownership with Shortest Payback Period and High ROI

Ideal for high-quality illumination in:

- Hospitals/Healthcare
- Hospitality Lighting
- Accent Lighting
- Architectural Lighting
- Other Commercial and Institutional Lighting Applications
- Retail and Shopping Malls
- Schools and Universities
- Municipalities
- Offices

Estimated
Energy Cost*
\$0.96
per year

*Electricity Cost Savings based upon using the Bulb for 25,000 rated life at 11c/KwH compared to Incandescent Bulb (rated at 1000 hour rated life).

HyLite LED Light Bulbs - Enjoy Superior Quality of Light and get Energy Savings of **88%** over Incandescent Bulbs and **65%** over CFL today!



Suitable for
Damp Locations **Enclosed Fixtures**

HyLite LED Bulb	Equivalent to / Energy Savings (%)*	
	Incandescent or Halogen Bulb	CFL Bulb
BR30, 8W	65W (88%)	23W (65%)

* Does not include Ballast Loss, Maintenance, Replacement Lamp Savings and Disposal Costs which amount to additional Savings of 30~50%!

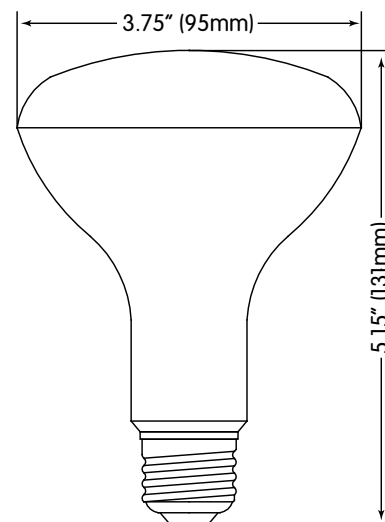


98%
RECYCLABLE



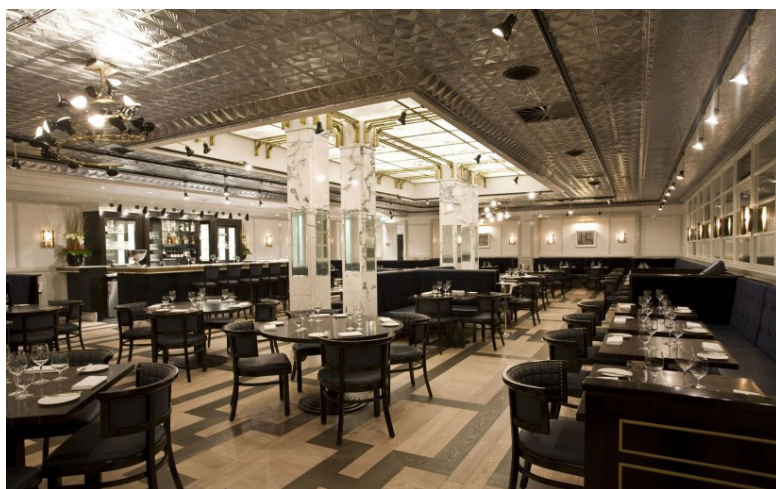
NO

LEAD, MERCURY,
HEAVY METALS
OR TOXIC GASES

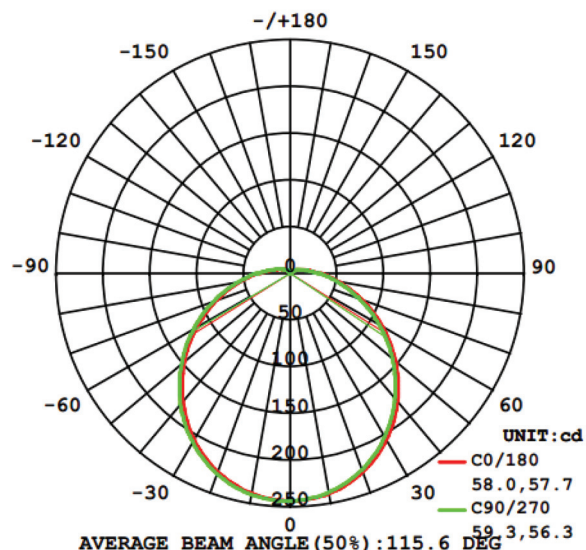


Model No.	Watts	Color Temp. (CCT)	Delivered Lumens	Efficacy (lpw)	Beam Angle	CRI	Base Type	Case Qty.	Case Dimensions Width x Depth x Height	Case Weight
HL-BR30-8WD-E26-27K	8	2700°K (Soft White)	760	95	120°	>82	E26/E27 Medium	40	20" x 14" x 13" (505 x 355 x 332mm)	15 Lbs. (7 Kg.)
HL-BR30-8WD-E26-30K	8	3000°K (Warm White)	811	102	120°	>82	E26/E27 Medium	40	20" x 14" x 13" (505 x 355 x 332mm)	15 Lbs. (7 Kg.)
HL-BR30-8WD-E26-50K	8	5000°K (Daylight)	874	113	120°	>82	E26/E27 Medium	40	20" x 14" x 13" (505 x 355 x 332mm)	15 Lbs. (7 Kg.)

Voltage: AC 100-120, 50/60Hz Dimming Range: 10~100% Ambient Working Temp.: -13°F~+104°F (-25°C~+40°C) Humidity Range: Up to 90%



Photometrics



Warning – Risk of Fire or Electric Shock

- Disable all Power to the Bulb before Inspection, Installation, or Removal. Failure to do so will create a Hazardous and Fatal Working Environment.
- For Indoor Use and in Dry or Damp Locations Only. Do not use where Directly Exposed to Liquid, Vapor, Rain or Weather. Fixtures must be installed in accordance with National, State, and/or Local Electrical Codes. Do Not Open – No User Serviceable Parts Inside.
- Operate in Fixtures that provide the Free Flow of Air around the Lamp Heat Sink.
- Not intended for use with Emergency Exit Fixtures or Emergency Exit Lights.